



# Crompton



## HAWK LED Street Light





# Crompton



## HAWK LED Street Light

Crompton Hawk is a integral LED PDC Street light aerodynamically designed with better thermal management. This LED luminaire designed to substitute conventional Streetlight applications. It comprises of separate lamp housing with heat resistant toughened glass & Control gear housing.

### Key Features:

- High Reliability
- Sleek innovative & Aero dynamic architectural design for better thermal management
- Energy efficient – saving up to 50%
- Luminaire efficacy > 100 lm/w
- Potted Driver is used to have a vibration proof performance
- Provided with Individual Surge Suppressor 5KV

### Application areas:

- Parking Area Lighting
- Road Lighting
- IT Parks
- Residential Colonies
- Internal Roads

Driver Certification



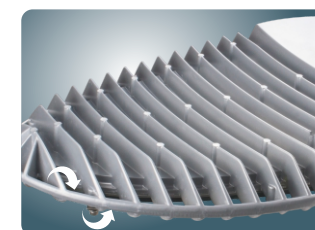
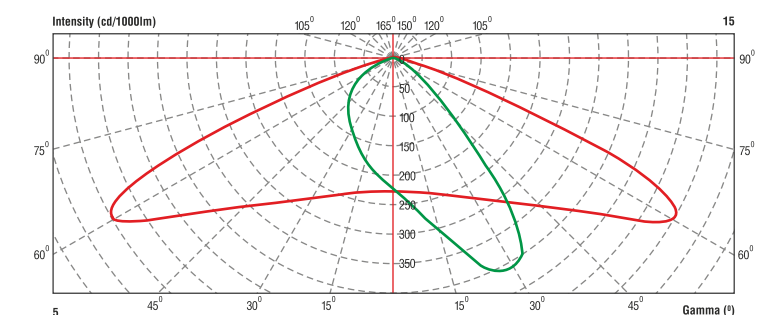
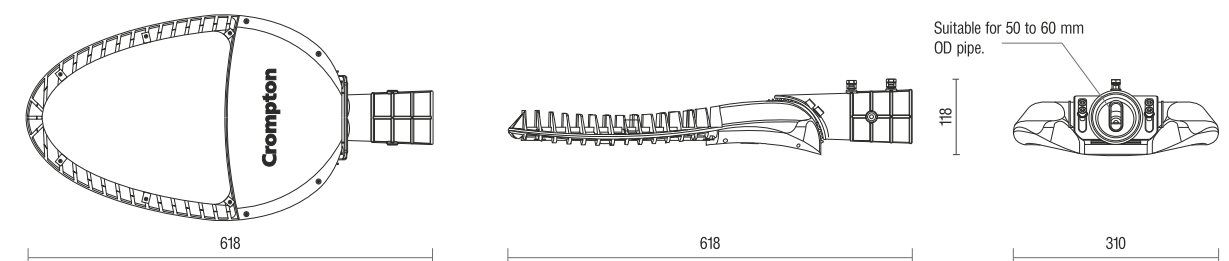
### Product Specification

Parameters	LSTN-90-CDL-A	LSTN-100-CDL-A	LSTN-120-CDL-A	LSTN-135-CDL-A
Rated System Wattage	90 W	100 W	120 W	135 W
IP Protection	IP 66, Class I	IP 66, Class I	IP 66, Class I	IP 66, Class I
Driver	Integral (inbuilt 4kVSPD)	Integral (inbuilt 4kVSPD)	Integral (inbuilt 4kVSPD)	Integral (inbuilt 4kVSPD)
Driver Efficiency	>90%	>90%	>90%	>90%
System Efficacy	>100 Lm/W	>100 Lm/W	>100 Lm/W	>100 Lm/W
Operating Range*	120 - 270V 50Hz	120 - 270V 50Hz	120 - 270V 50Hz	120 - 270V 50Hz
THD	<10%	<10%	<10%	<10%
PF	≥0.95	≥0.95	≥0.95	≥0.95
Surge Protection**	5 KV	5 KV	5 KV	5 KV
CCT	5700 K ANSI	5700 K ANSI	5700 K ANSI	5700 K ANSI
CRI	>70	>70	>70	>70

### Note:

\* Luminaire operates up to 300VAC for 72 hours.

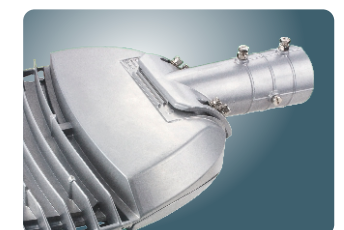
\*\* Additional surge protection of 5kV integrated in luminaire (10kV additional SPD can also be provided on Request)



Better thermal Management & heat deception.



Secondary PC/PMMA lens for optimized light distribution.



In-built tilting arrangement of mounting pipe in 5°steps to suit the installations.





# HAWK II LED Street Light

Crompton Hawk II is an integral High Wattage LED PDC Street light aerodynamically designed with better thermal management. This LED luminaire designed to substitute conventional Streetlight applications. It comprises of housing with frame and heat resistant toughened glass.

Key Features:

- High Reliability
- Sleek innovative & Aero dynamic architectural design for better thermal management
- Energy efficient – saving up to 50%
- Luminaire efficacy > 100 lm/w
- Potted Driver is used to have a vibration proof performance
- Provided with Individual Surge Suppressor 5KV

Application Areas:

- Highways
- Important Roads
- Large Link Roads
- IT Parks

Driver Certification

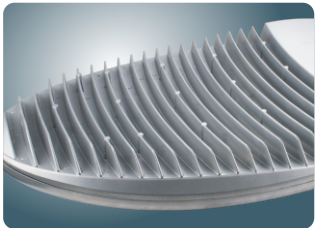
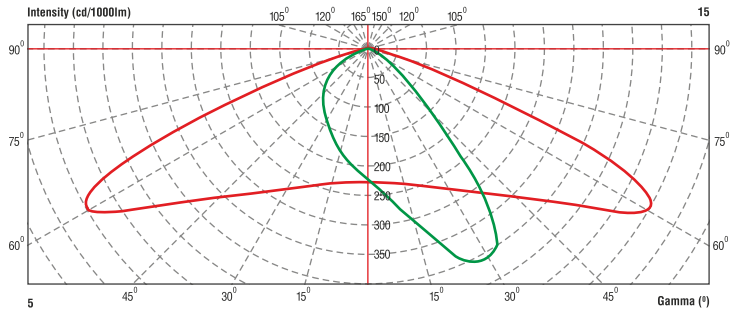
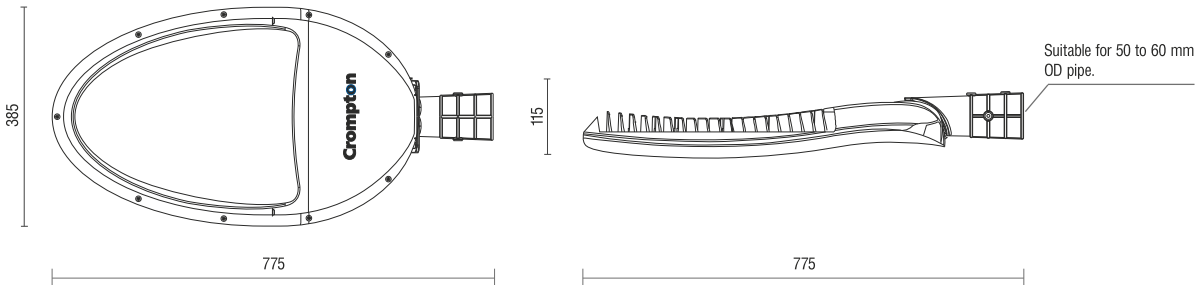


Product Specification

Parameters	LSTN-150-CDL-A	LSTN-170-CDL-A	LSTN-200-CDL-A	LSTN-220-CDL-A
Rated System Wattage	150 W	170 W	200 W	220 W
IP Protection	IP 66, Class I	IP 66, Class I	IP 66, Class I	IP 66, Class I
Driver	Integral (inbuilt 4kVSPD)	Integral (inbuilt 4kVSPD)	Integral (inbuilt 4kVSPD)	Integral (inbuilt 4kVSPD)
Driver Efficiency	>90%	>90%	>90%	>90%
System Efficacy	>100 Lm/W	>100 Lm/W	>100 Lm/W	>100 Lm/W
Operating Range*	120 - 270V 50Hz	120 - 270V 50Hz	120 - 270V 50Hz	120 - 270V 50Hz
THD	<10%	<10%	<10%	<10%
PF	≥0.95	≥0.95	≥0.95	≥0.95
Surge Protection**	5 KV	5 KV	5 KV	5 KV
CCT	5700 K ANSI	5700 K ANSI	5700 K ANSI	5700 K ANSI
CRI	>70	>70	>70	>70

Note:

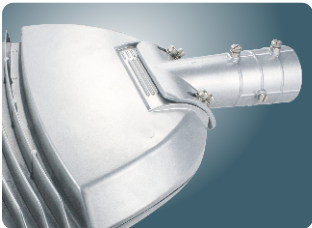
- \* Luminaire operates up to 300VAC for 72 hours.
- \*\* Additional surge protection of 5KV integrated in luminaire (10KV additional SPD can also be provided on Request)



Better thermal Management & heat deception.



Secondary PC/PMMA lens for optimized light distribution.



In-built tilting arrangement of mounting pipe in 5°steps to suit the installations.



# Latest Credentials



Airport Road - Cochin



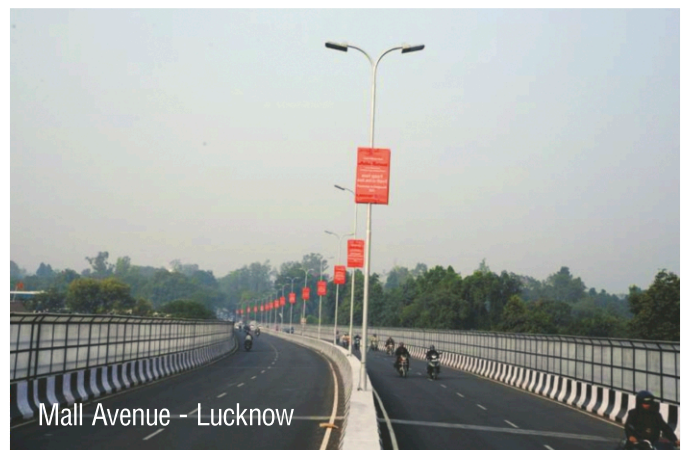
TSIC - Hyderabad



Hari Pathak Bridge - Ujjain



Marine Drive - Jamshedpur



Mall Avenue - Lucknow



# Crompton

**H.O. Mumbai:**

**Crompton Greaves Consumer Eletricals Limited**

Lighting Division, 1st Floor, Tower No. 3, Equinox Commercial Complex,  
LBS Marg, Kurla West, Mumbai-400 070 T: (022) 6167 8499

**Registered Office:**

CG House, 6th Floor, Dr. Annie Besant Road, Worli, Mumbai-400 030 India

[www.crompton.co.in](http://www.crompton.co.in)